



Ordinance 2006-91 Exhibit G



Amendments to the:  
**2006 International Wildland-Urban Interface Code**

**Section 101.1 Scope.** REVISE section by ADDING new forth paragraph to read:  
This code shall apply only to areas designated rural forest village under the Pima County Comprehensive Plan and areas encircled thereby.

**Section 105.3 Work exempt from permit.** REVISE item number 1 to REPLACE “120 square feet (11m<sup>2</sup>)” with “200 square feet (18.58m<sup>2</sup>).”

**Section 105.8 Expiration.** REVISE section by DELETING the first two occurrences of the phrase fragment “180 days” and REPLACING these with “365 days”.

**Section 106.3 Site plan.** REVISE section by STRIKING the last “and”, STRIKING the period and INSERTING “and nearest hydrant or fire protection system.”

**Section 106.7 Vicinity Plan.** DELETE section in its entirety.

**Section 202 Definitions.** REVISE “code official” definition by INSERTING “including fire districts” before the period.

**Section 402.1.1 Access.** REVISE section by STRIKING the word: “new” and capitalize the “s” in subdivision.

**Section 403.2 Driveways.** REVISE section by STRIKING “of the first story” in the first sentence.

**Section 403.3 Fire apparatus road.** REVISE section by STRIKING the first two words of the first sentence “when required” and capitalize the “f” in fire. ADD the following to the end of the paragraph:

**Exception:** access roads as approved by the fire districts.

**Section 501.1 Scope.** REVISE section to REPLACE occurrences of “50 feet” with “10 feet”.

**Section 602 Automatic sprinkler systems.** DELETE section in its entirety.

ADD Appendix C from the International Fire Code, and NFPA 1144.

GRAPHIC COMPANION  
FOR THE 2006  
INTERNATIONAL WILDLAND URBAN  
INTERFACE CODE  
FOR  
PIMA COUNTY ARIZONA



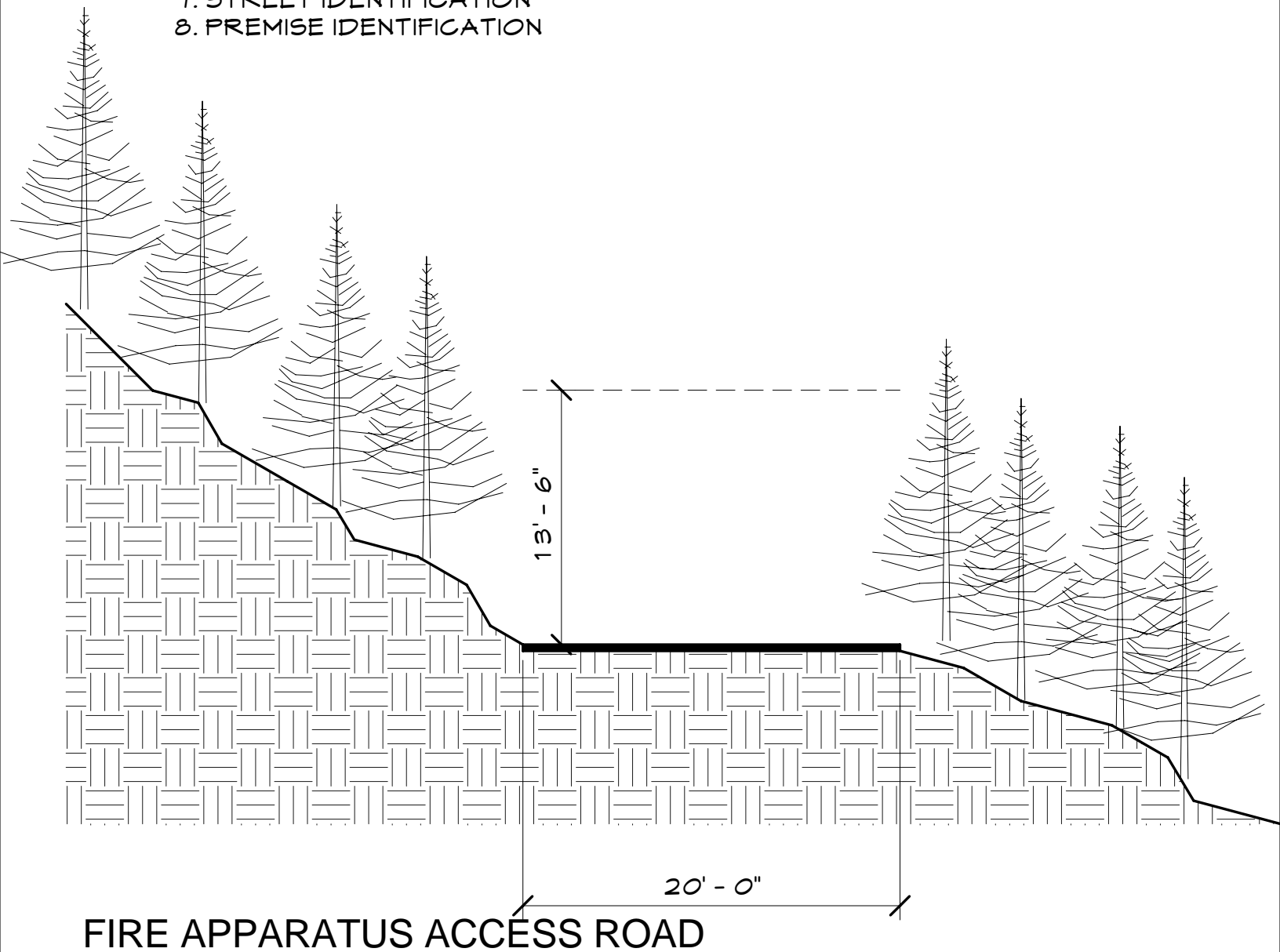
This is a graphic representation of the major provisions of the 2006 International Wildland Urban Interface Code adopted and amended by Pima County. Keep in mind that what follows is subject to change.

The various details provided are by no means the only ones that will be permitted by this code and are provided to convey the concepts in the code. Also your site may have unique problems, provisions have been made to modify these requirements on a case by case basis.

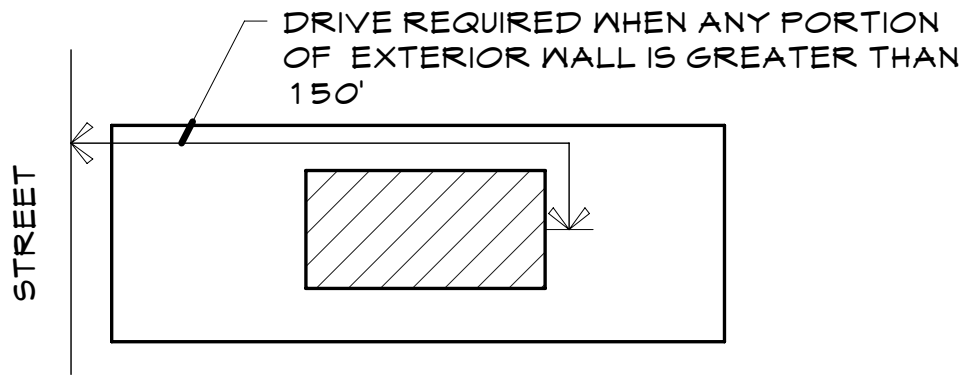
- 1 FIRE APPARATUS ACCESS ROAD
- 2 DRIVEWAYS
- 3 DRIVE TURNAROUND AND TURNOUT
- 4 WATER SUPPLY
- 5 DEFENSIBLE SPACE
- 6 WALL SECTION 1
- 7 WALL SECTION 2
- 8 WALL SECTION 3
- 9 CONSTRUCTION MATERIALS
- 10 OPENING ELEVATION
- 11 ROOF SOFFIT OVERHANG DETAILS
- 12 EXPOSED ROOF OVERHANG
- 13 HEAVY TIMBER CONSTRUCTION
- 14 PORCH DECKS

## REQUIREMENTS

1. 20' MINIMUM WIDTH
2. 13'-6" HEIGHT CLEARANCE
3. ALL WEATHER ACCESS (PAVED) OR AS DETERMINED BY CODE OFFICIAL
4. 12% MAXIMUM GRADE
5. NO DEADENDS GREATER THAN 150 FEET WITH OUT TURNAROUND  
IFC EXCEPTION (503) CAN BE INCREASED
  - A. BUILDING FIRESPRINKLERED
  - B. ALTERNATE MEANS PROVIDED WHEN INFEASIBLE
  - C. NOT MORE THAN 2 R-3 OR U OCCUPANCIES
6. TURNING RADIUS AS DETERMINED BY CODE OFFICIAL
7. STREET IDENTIFICATION
8. PREMISE IDENTIFICATION

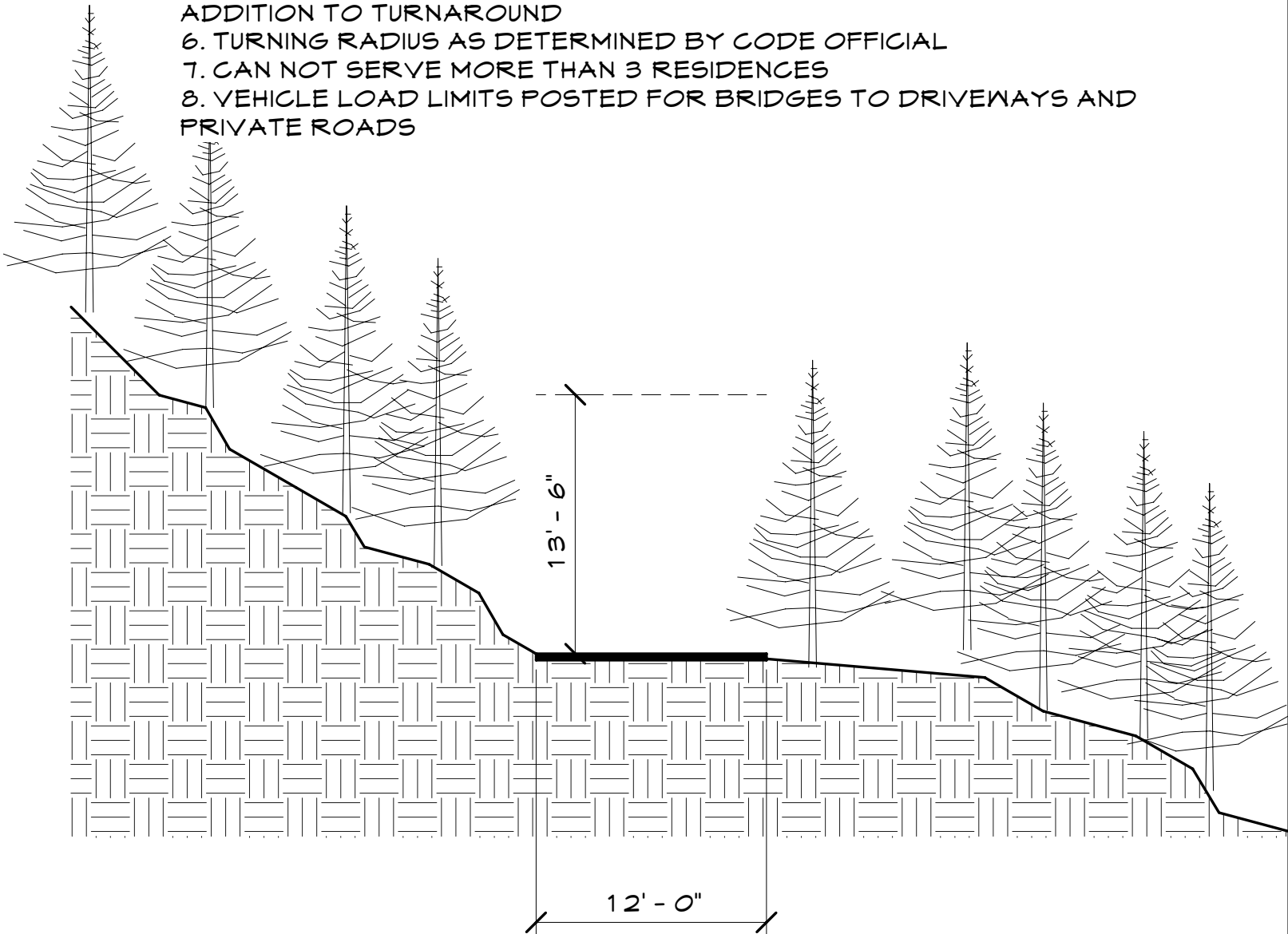


NTS

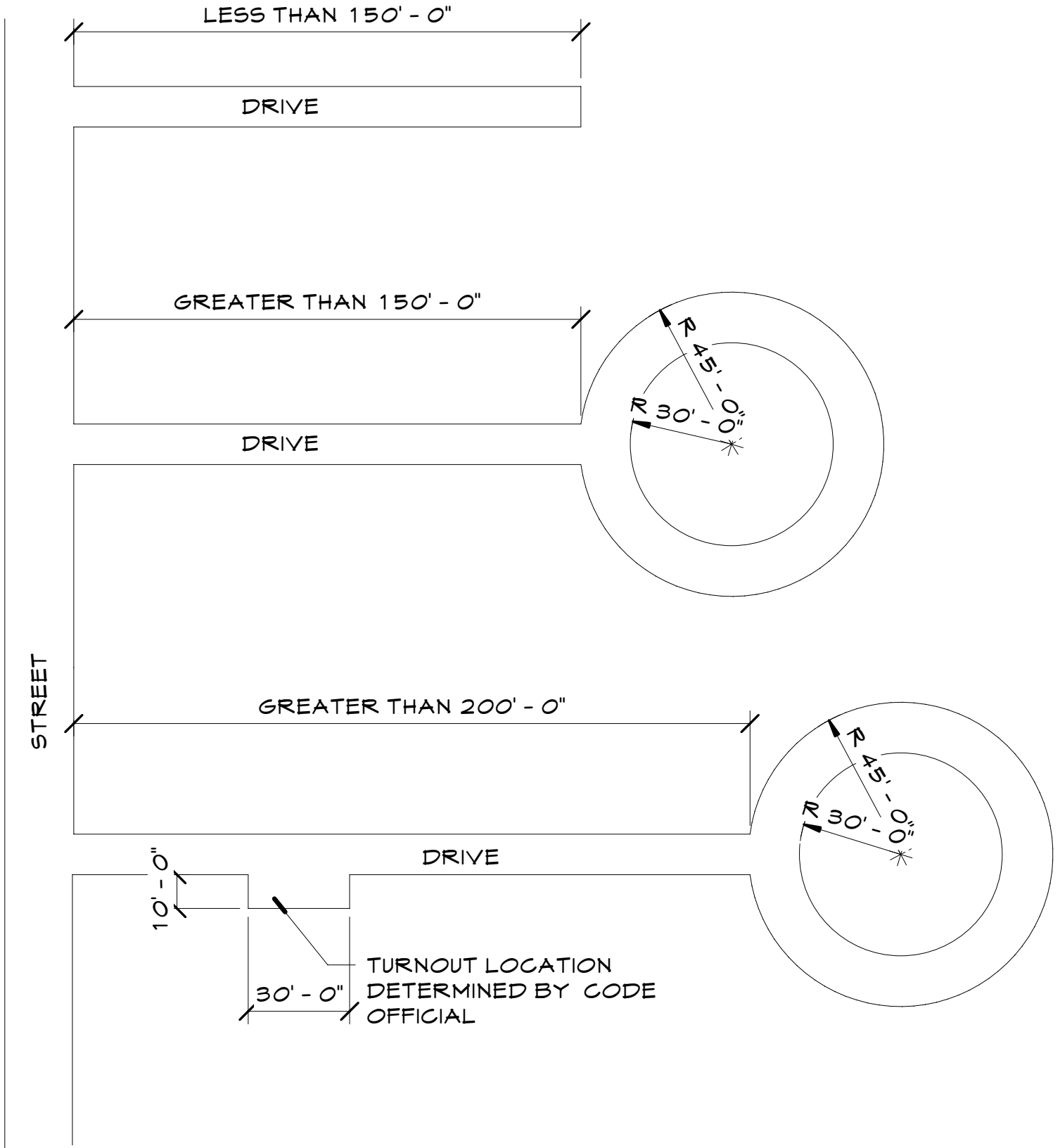


**REQUIREMENTS**

1. 12' MINIMUM WIDTH
2. 13'-6" HEIGHT CLEARANCE
3. ALL WEATHER ACCESS AS DETERMINED BY CODE OFFICIAL
4. MAXIMUM GRADE PERMITTED AS DETERMINED BY CODE OFFICIAL
5. NO DEADENDS GREATER THAN 150 FEET WITH OUT TURNAROUND
6. NO DEADENDS GREATER THAN 200 FEET WITHOUT TURNOUT IN ADDITION TO TURNAROUND
6. TURNING RADIUS AS DETERMINED BY CODE OFFICIAL
7. CAN NOT SERVE MORE THAN 3 RESIDENCES
8. VEHICLE LOAD LIMITS POSTED FOR BRIDGES TO DRIVEWAYS AND PRIVATE ROADS



**DRIVEWAYS**



## DRIVE TURNAROUND AND TURNOUT

NTS

**REQUIREMENTS**

- 1. WATERSOURCE WITHIN 1000 FEET FROM BUILDING
- 2. ADEQUATE WATER SUPPLY

- a. 1-2 FAMILY DWELLINGS

- <3600 S.F. 1000 GALLON PER MINUTE FOR 30 MINUTES

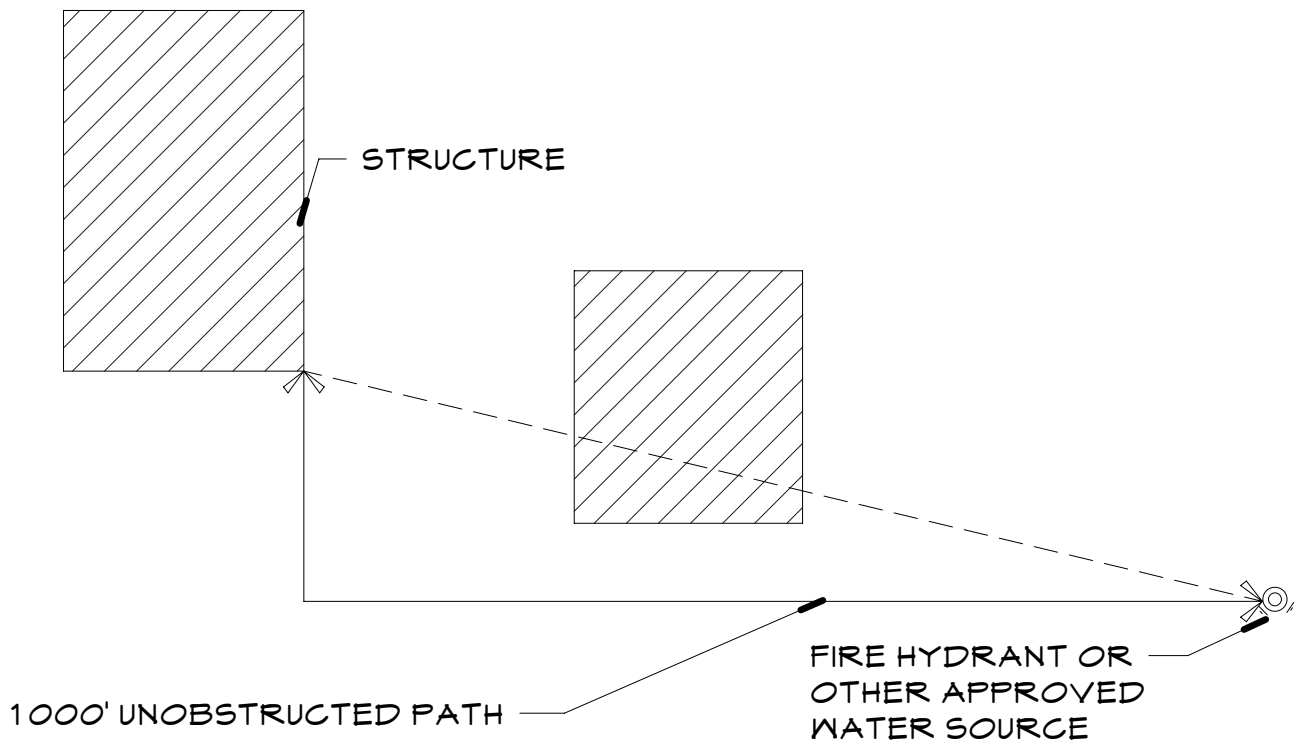
- >3600 S.F. 1500 GALLONS PER MINUTE FOR 30 MINUTES

- FLOW RATE CAN BE REDUCED 50% WITH APPROVED AUTOMATIC FIRE SPRINKLERS AND APPROVAL BY CODE OFFICIAL.

- b. OTHER

- 1500 GALLONS PER MINUTE FOR 2 HOURS

- FLOW RATE CAN BE REDUCED 75% WITH APPROVED AUTOMATIC FIRE SPRINKLERS AND MINIMUM 1500 GPM AND APPROVAL OF CODE OFFICIAL

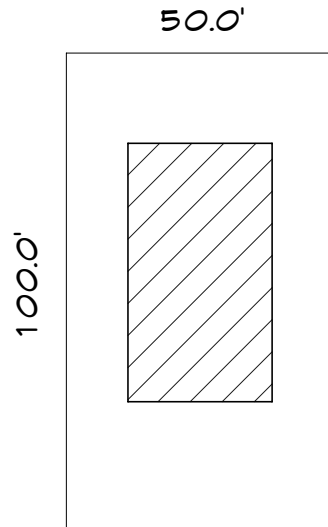


**WATER SUPPLY**

NTS

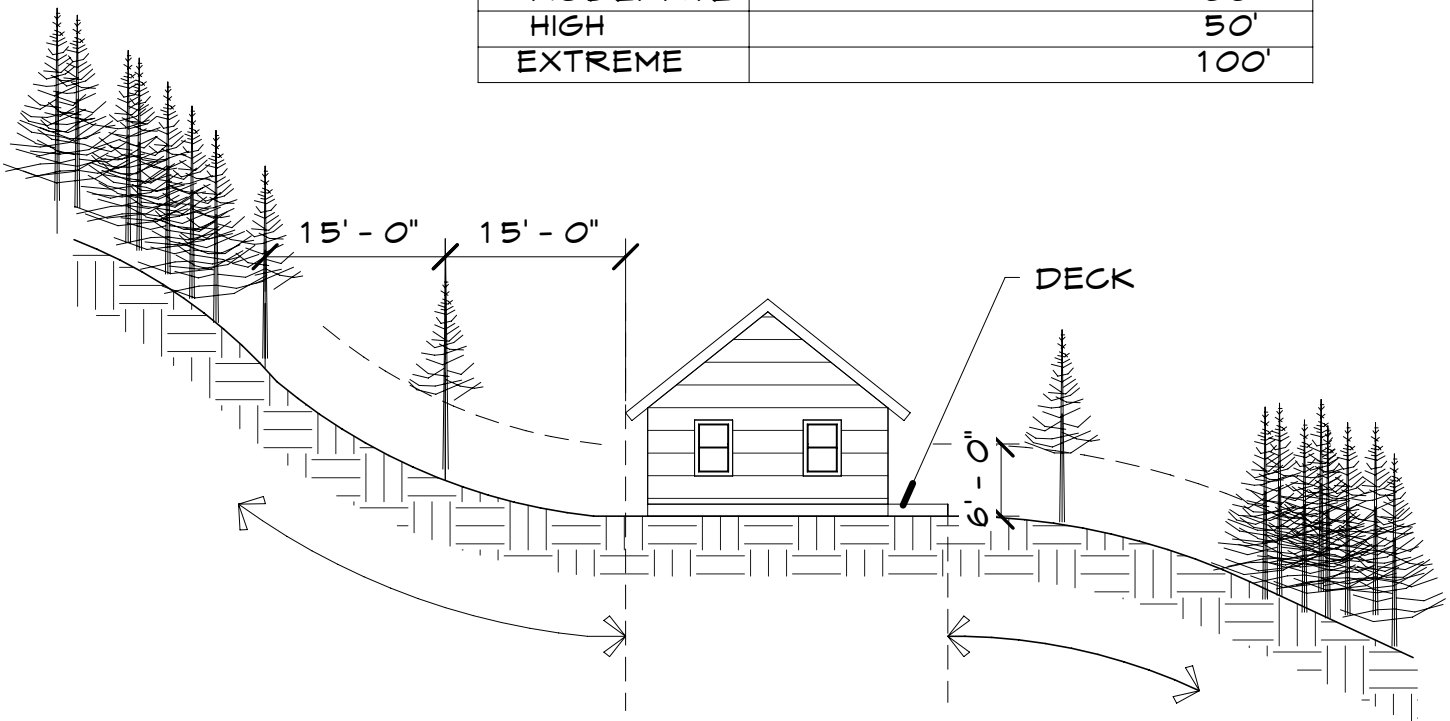
**DEFENSIBLE SPACE**

1. 15 FOOT MINIMUM DEFENSIBLE SPACE OR DISTANCE TO PROPERTY LINE
2. DEFENSIBLE SPACE FOR USE IN TABLE 503.1 MUST MEET MINIMUM DISTANCES IN TABLE 603.2
3. ANY OF THESE REQUIREMENTS CAN BE MODIFIED BY THE FIRE DISTRICT



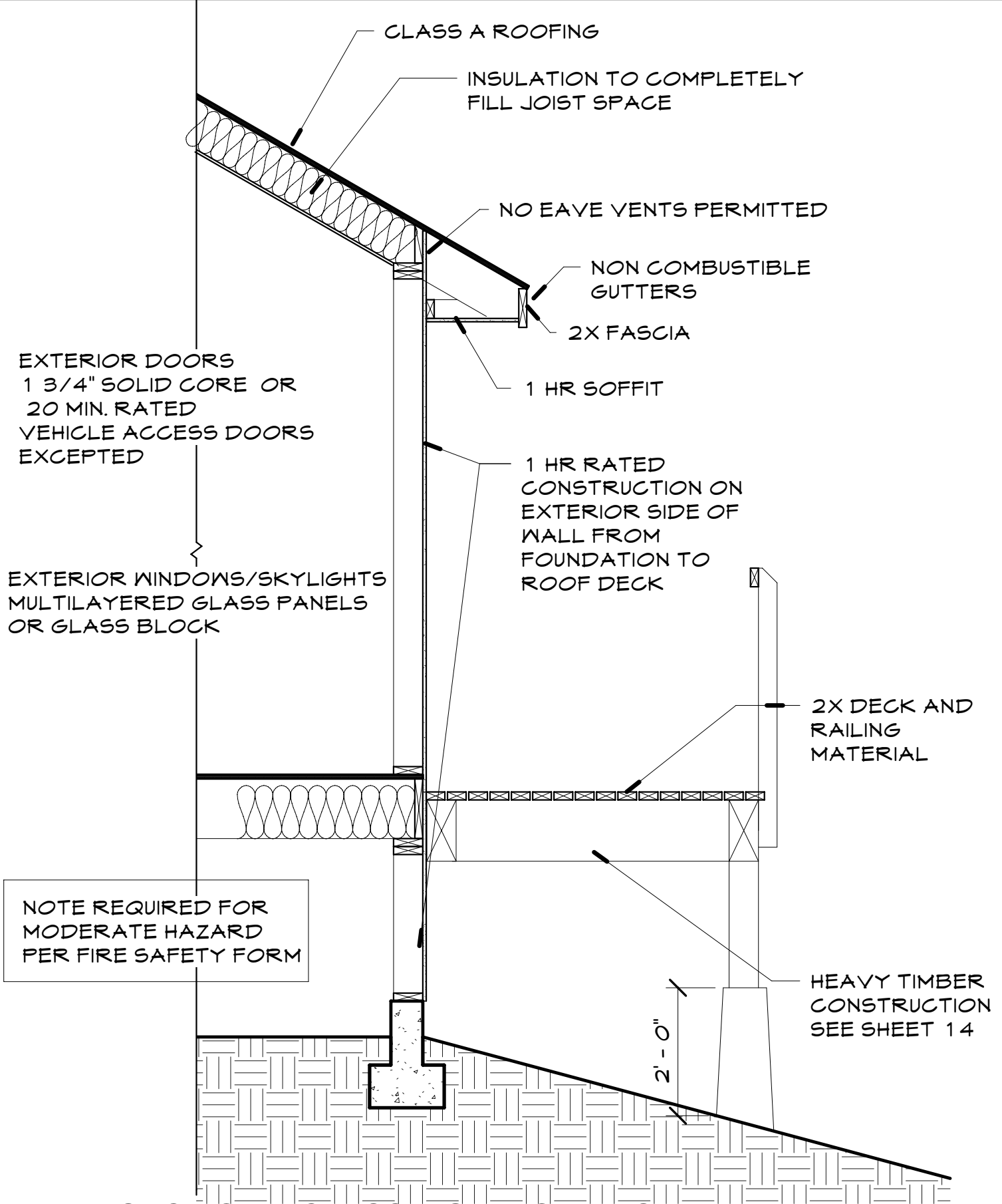
**TABLE 603.2  
REQUIRED DEFENSIBLE SPACE**

UNI AREA	FUEL MODIFICATION DISTANCE
MODERATE	30'
HIGH	50'
EXTREME	100'



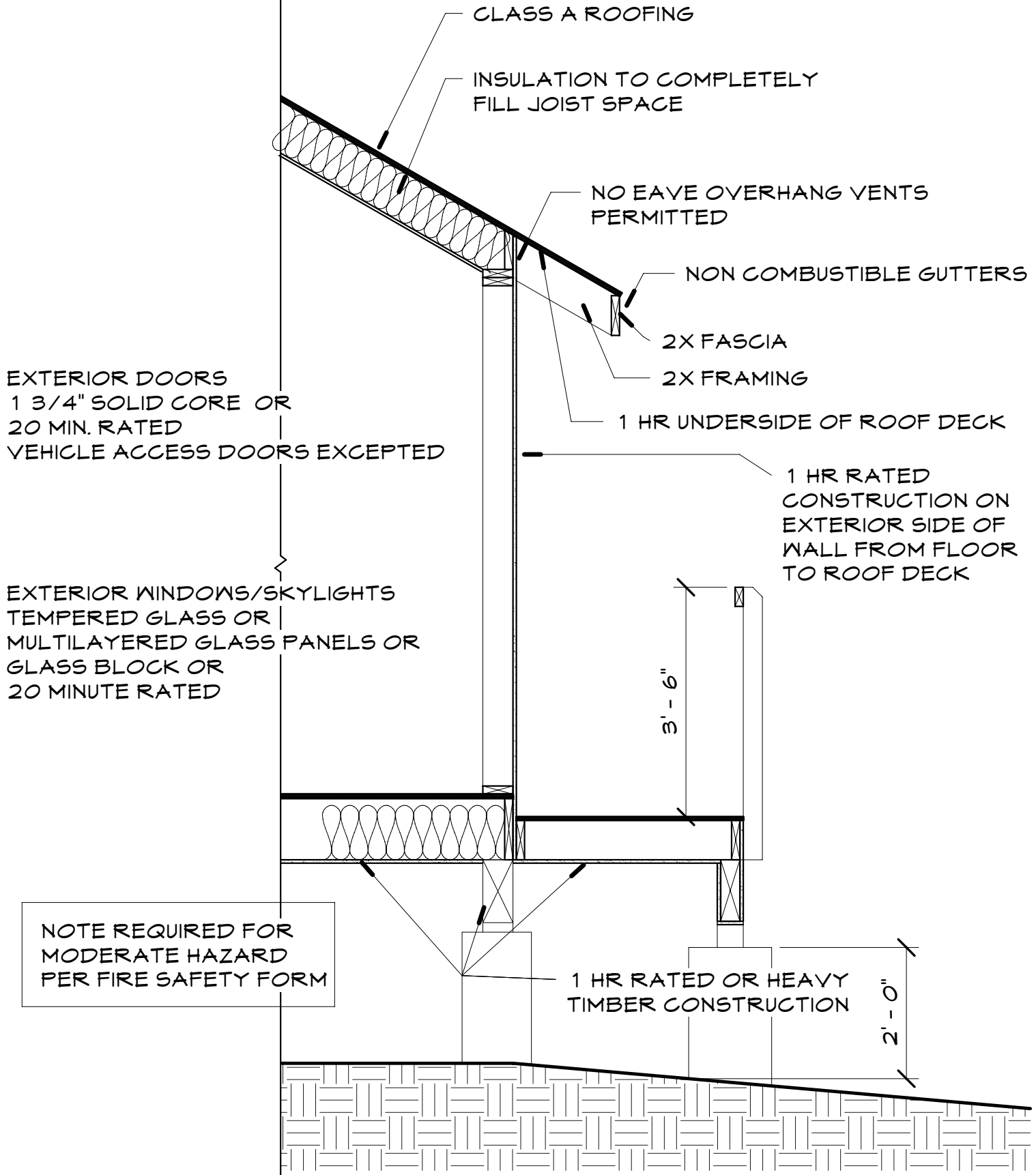
**DEFENSIBLE SPACE**

NTS



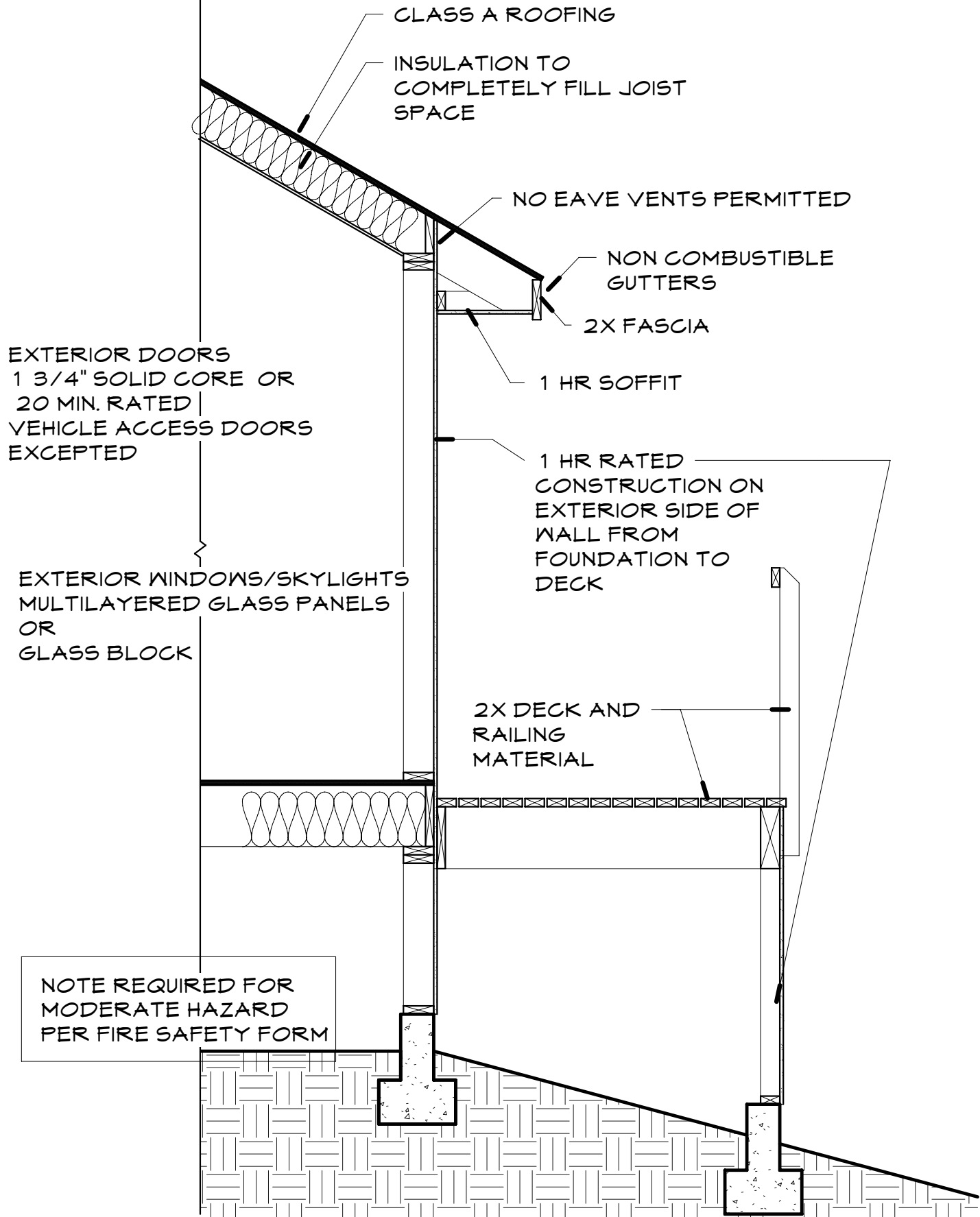
**WALL SECTION 1 CLASS I IGNITION RESITANT  
CONSTRUCTION**

NTS



**WALL SECTION 2 CLASS I IGNITION RESITANT CONSTRUCTION**

NTS



**WALL SECTION 3 CLASS I IGNITION RESITANT  
CONSTRUCTION**

NTS

# CLASS A ROOFING

PERMITTED IN CODE WITHOUT ADDITIONAL DOCUMENTATION  
(WITH FIRESTOPPED EAVE)

SLATE

CLAY OR CONCRETE ROOF TILES

EXPOSED CONCRETE DECK

FERROUS OR COPPER SHINGLES OR SHEETS

APPROVED WITH ADDITIONAL DOCUMENTATION

ASPHALT/ FIBERGLASS SHINGLES

3 PLY B.U. ROOF/MEMBRANE ROOFING

# 1 HOUR EXTERIOR WALL

PERMITTED IN CODE WITHOUT ADDITIONAL DOCUMENTATION

5/8" TYPE 'X' GYPSUM SHEATHING. EXTERIOR CLADDING TO  
BE ATTACHED THROUGH SHEATHING TO STUDS

7/8" 3 COAT CEMENT STUCCO

HEAVY TIMBER CONSTRUCTION (6X6 OR LARGER)  
OR LOG WALL CONSTRUCTION

# 1 HOUR FLOOR

PERMITTED IN CODE WITHOUT ADDITIONAL  
DOCUMENTATION

5/8" TYPE 'X' GYPSUM SHEATHING EXTERIOR CLADDING TO  
BE ATTACHED THROUGH SHEATHING TO JOISTS

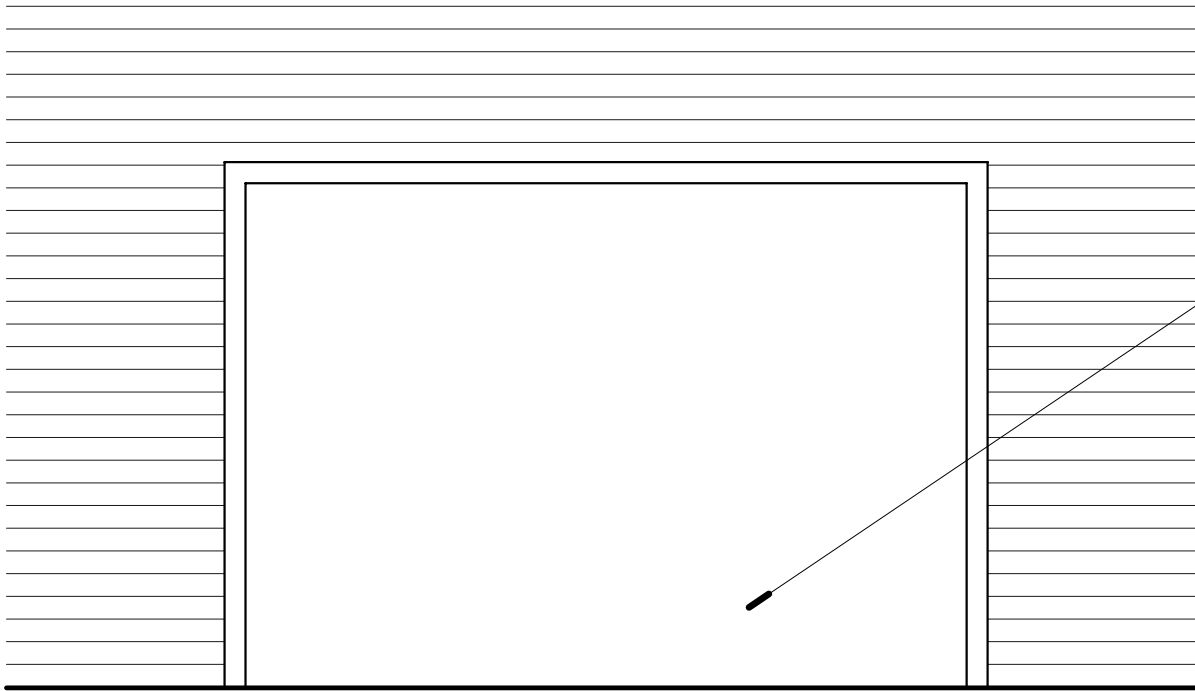
7/8" 3 COAT CEMENT STUCCO

HEAVY TIMBER CONSTRUCTION  
6X6 OR LARGER COLUMNS  
6X10 OR LARGER BEAMS  
3X10 OR LARGER JOISTS

3

## CONSTRUCTION MATERIALS

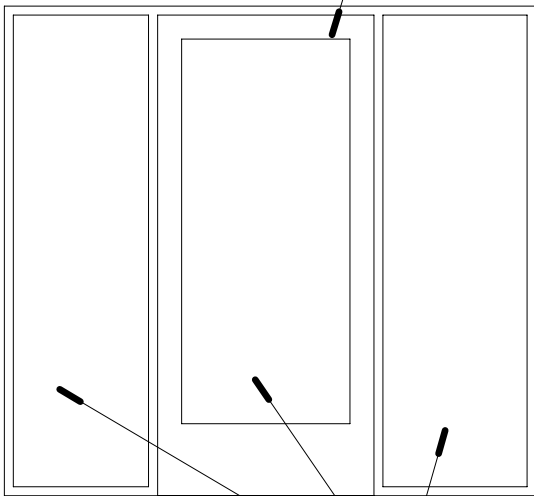
NTS



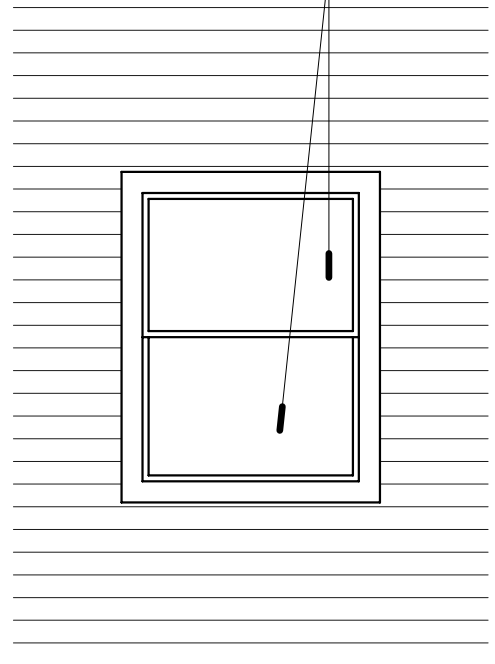
GARAGE  
DOORS NOT  
REQUIRED TO  
BE RATED

CLASS 1 & CLASS 2 IGNITION RESISTANT CONSTRUCTION  
EXTREME & HIGH HAZARD PER FIRE SEVERITY FORM

METAL OR 1 3/4"  
WOOD FRAME OR  
20 MIN LABEL



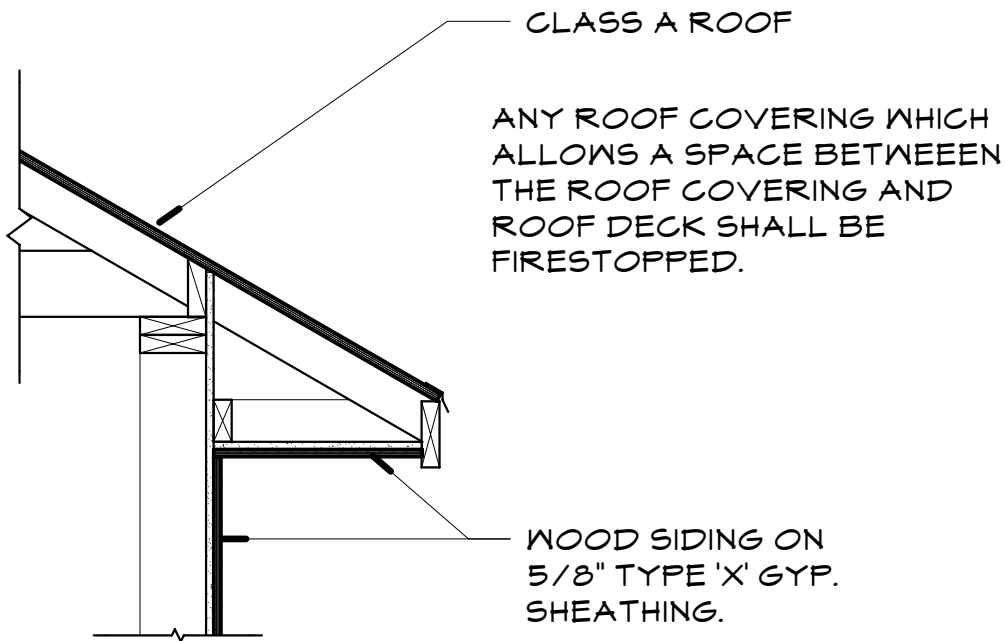
DUAL PANE GLASS



DUAL PANE TEMPERED  
GLASS

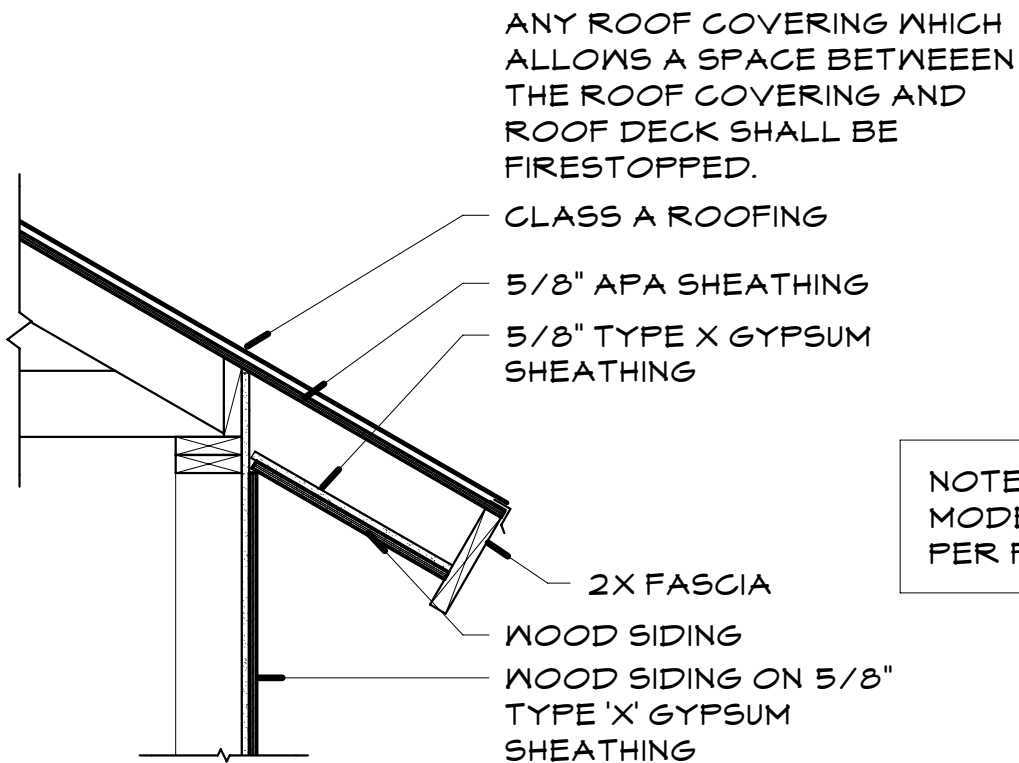
## OPENING ELEVATION

NTS



## ROOF OVERHANG WITH SOFFIT

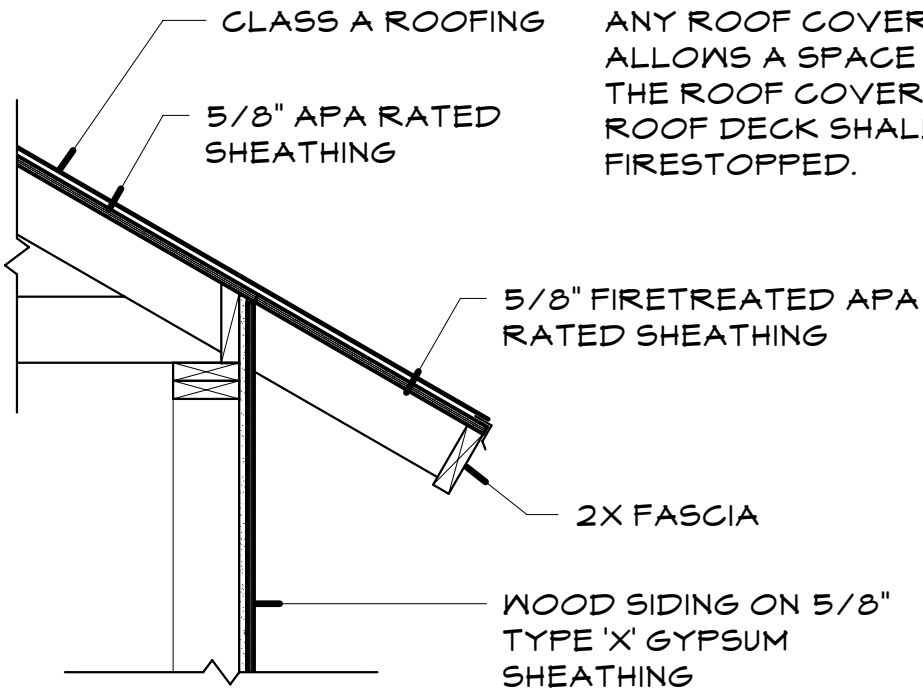
NTS



NOTE REQUIRED FOR  
MODERATE HAZARD  
PER FIRE SAFETY FORM

## ROOF OVERHANG WITH SOFFIT

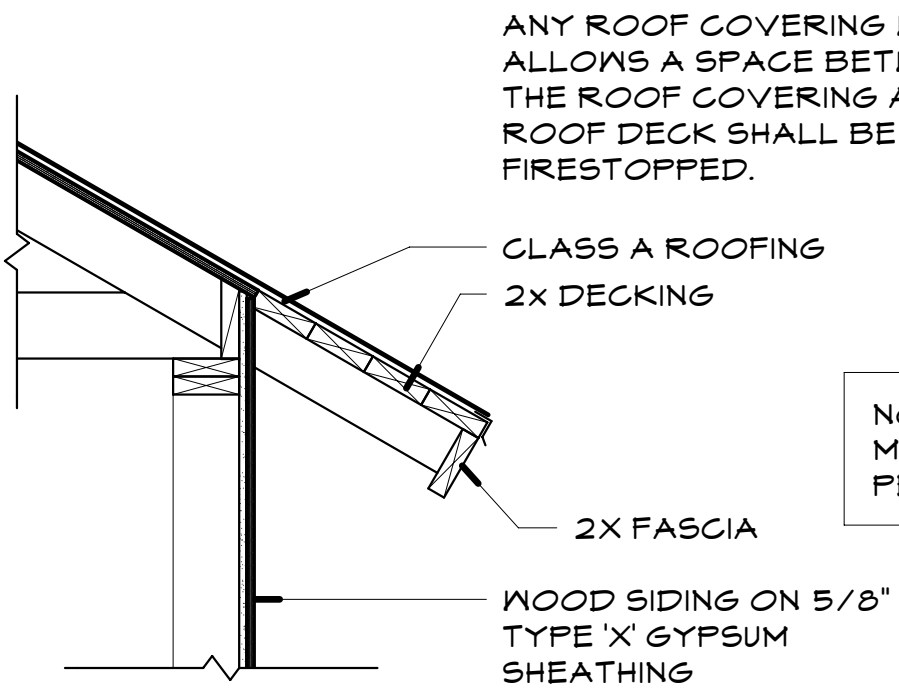
NTS



ANY ROOF COVERING WHICH ALLOWS A SPACE BETWEEN THE ROOF COVERING AND ROOF DECK SHALL BE FIRESTOPPED.

### EXPOSED ROOF OVERHANG

NTS

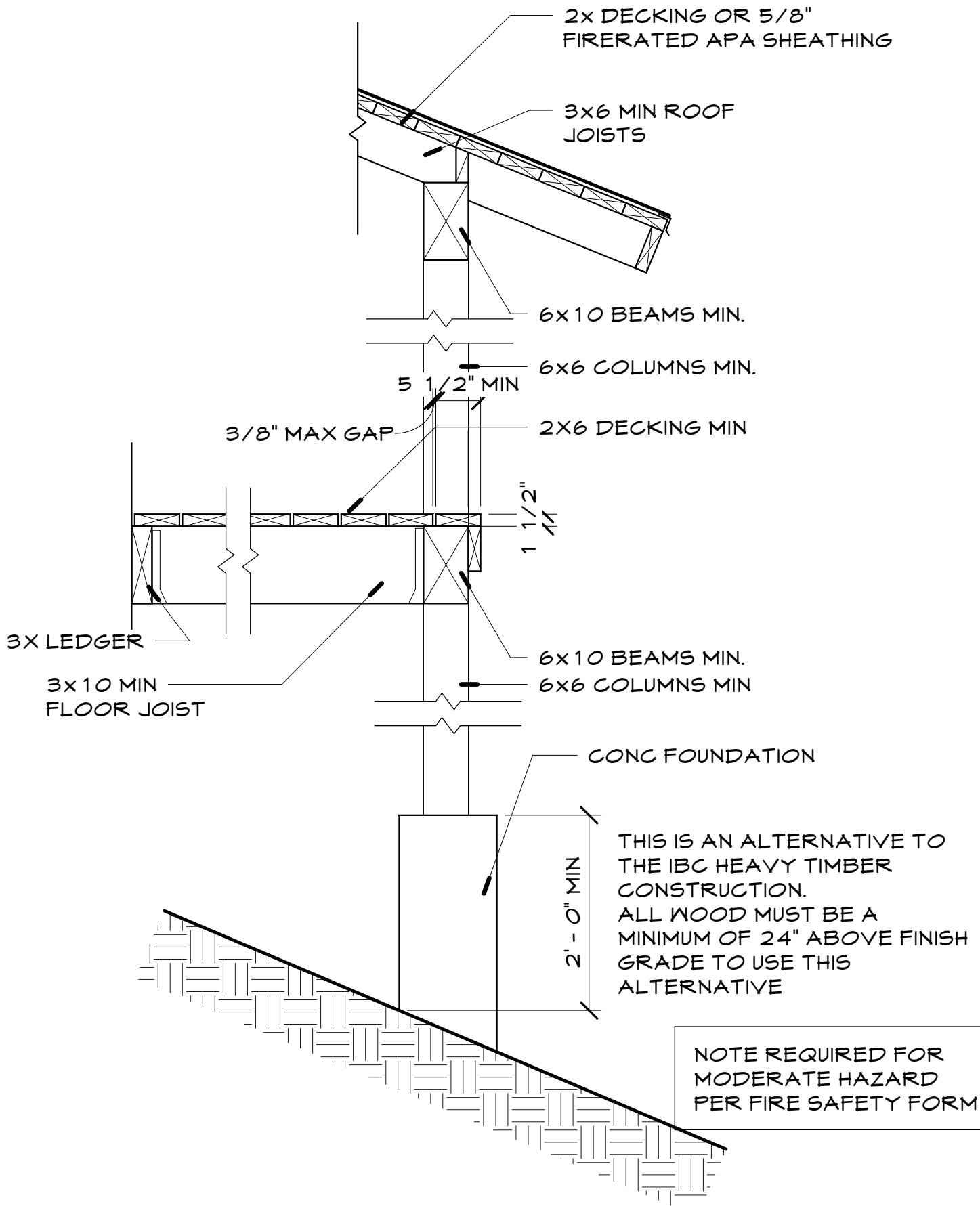


ANY ROOF COVERING WHICH ALLOWS A SPACE BETWEEN THE ROOF COVERING AND ROOF DECK SHALL BE FIRESTOPPED.

NOTE REQUIRED FOR MODERATE HAZARD PER FIRE SAFETY FORM

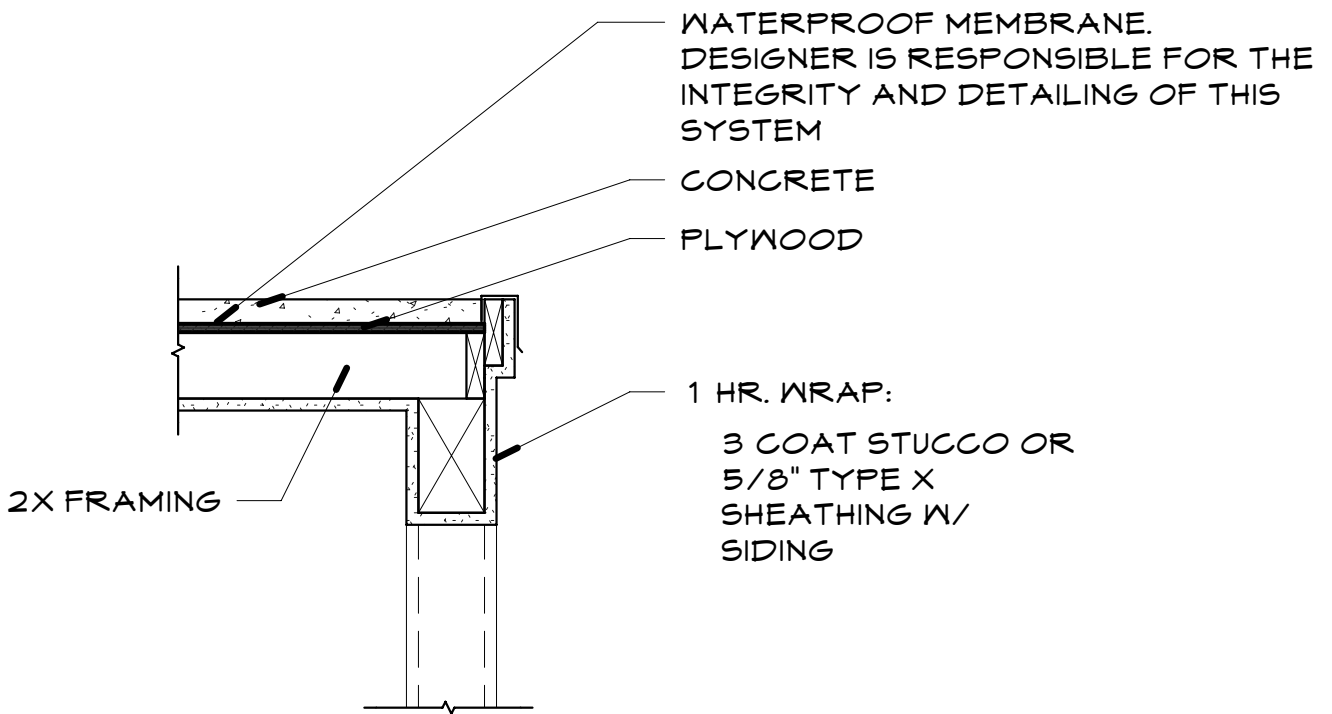
### 2x EXPOSED DECKING

NTS



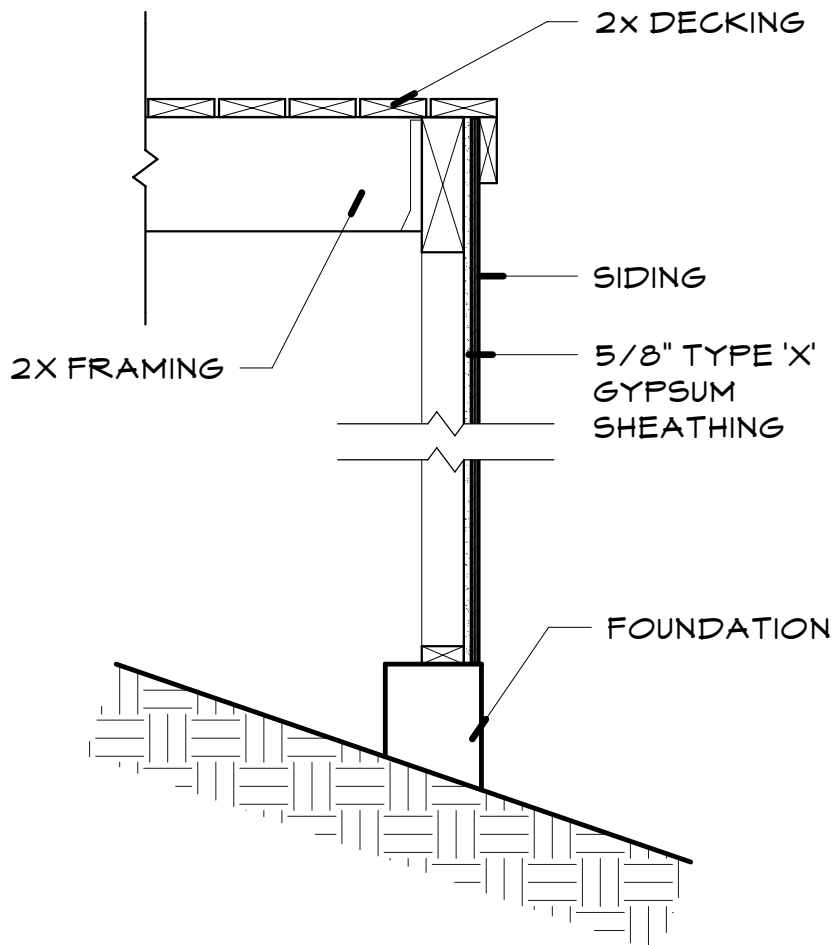
## HEAVY TIMBER CONSTRUCTION FOR CLASS 1 & 2

NTS



### 1HR. WRAP FLOORING

NTS



NOTE REQUIRED FOR  
MODERATE HAZARD  
PER FIRE SAFETY FORM

### 2x DECKING W/ SIDING

NTS